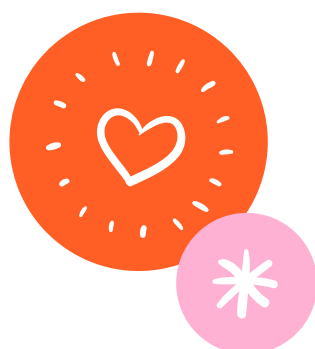


CREATE FUTURE - PROJECT CREATING SUPPORT MODELS FOR PARTICIPATION IN FUTURE WORK LIFE



What is a service portfolio?

SERVICE PORTFOLIO

Up-to-date information on a person's skills, strengths, areas for development and need for support. It can be shown for support services, families and work life representatives.



**"RESPECTFUL
ENCOUNTERING
MATTERS."**

- Create Future - project partners

It is a way to express yourself. It's a way of communication with professionals, other participants, and family members. Time for reflection on your own work, skills, abilities and things to improve.



SKILLS
Identification of the individual skills.

STRENGTHS
Academic, job-related, communication etc.

CHALLENGES
How to cope and go forward when challenges emerge?

GOALS
What individual goals are pursued?

DEVELOPMENT
What are the areas that need to be practiced?

SUPPORT NEEDS
What kind of support is needed and who is involved?



Info is important for every one who is involved in the integration process: the supported person, the family, the supporting technical staff and the employer.



IT IS A DOCUMENT THAT TAKES IN CONSIDERATION, THE COMPETENCES DEVELOPED ALONG THE TIME (LIFE), WHICH REFLECTS THE ABILITIES THAT THE CUSTOMER ACQUIRE IN THE FOLLOWING AREAS: PERSONAL, SOCIAL, VOCATIONAL, PROFESSIONAL. IT IS HELPFUL IN ORDER TO FEEL RECOGNIZED.

CREATE FUTURE - PROJECT CREATING SUPPORT MODELS FOR PARTICIPATION IN FUTURE WORK LIFE



Making a portfolio

PERSONAL PORTFOLIO

Keep in mind what the purpose of making a portfolio is at every step of the way.



"AS LEARNING PROGRESSES, SUPPORT SHOULD BE REDUCED."

- Create Future - project partners

Students need support in making portfolios, just as they do in other learning.

Some of them need help making the portfolios in every step of the way, and some of them are able to implement it more independently.



The instructor should know the abilities of those being mentored and know when they need more challenge or when they need more support.

Informal learning and micro credentials should be taken into account. These also help with making the life long learning visible.

ENCOURAGE

Support should be encouraging and feedback based.

EXPERIMENT

Don't be afraid of trying and failing, that is way you can learn.

CREATIVITY

With a portfolio you can emphasise your personality.

Tips that might help, when a person needs special support:

- remember to keep things clear and concise (simplicity)
- use pictograms in order to facilitate one's understanding
- use case based methods
- photos and images tell a lot
- a video can give a holistic impression about the person and his/ her abilities

Examples of different ways to implement a portfolio:

- Through the social media (Instagram, Pinterest, TikTok etc.)
- Video stories
- Google sites
- Pitching speech

